

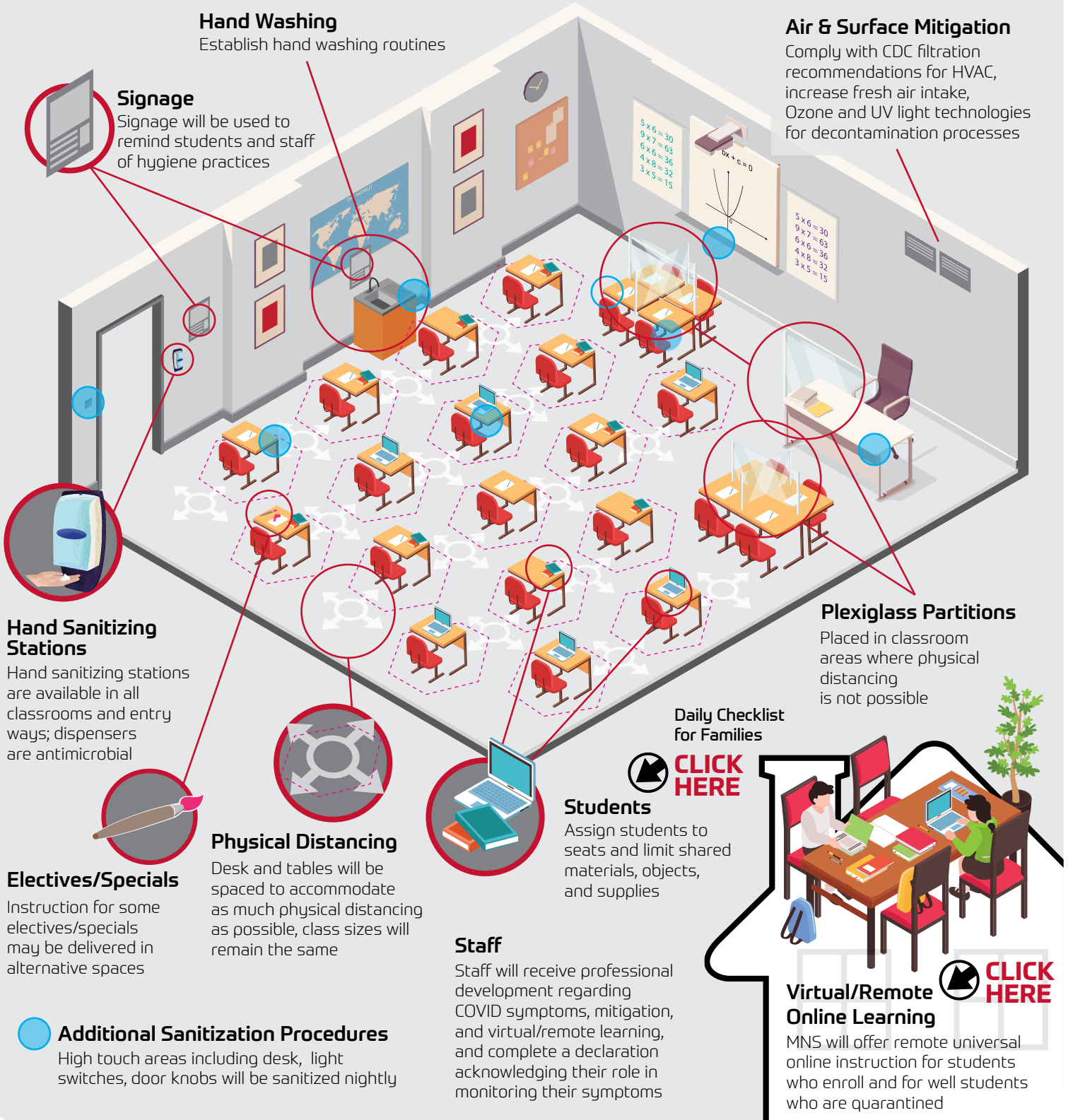
STAY SAFE to STAY OPEN

DRAFT

Updated July 31, 2020



PLAN FOR FALL 2020 RE-ENTRY: In Person with Practical Mitigating Measures or Enroll in Virtual



Hand Washing

Establish hand washing routines

Signage

Signage will be used to remind students and staff of hygiene practices

Air & Surface Mitigation

Comply with CDC filtration recommendations for HVAC, increase fresh air intake, Ozone and UV light technologies for decontamination processes

Hand Sanitizing Stations

Hand sanitizing stations are available in all classrooms and entry ways; dispensers are antimicrobial

Plexiglass Partitions

Placed in classroom areas where physical distancing is not possible

Physical Distancing

Desk and tables will be spaced to accommodate as much physical distancing as possible, class sizes will remain the same

Daily Checklist for Families

CLICK HERE

Electives/Specials

Instruction for some electives/specials may be delivered in alternative spaces

Students

Assign students to seats and limit shared materials, objects, and supplies

Staff

Staff will receive professional development regarding COVID symptoms, mitigation, and virtual/remote learning, and complete a declaration acknowledging their role in monitoring their symptoms



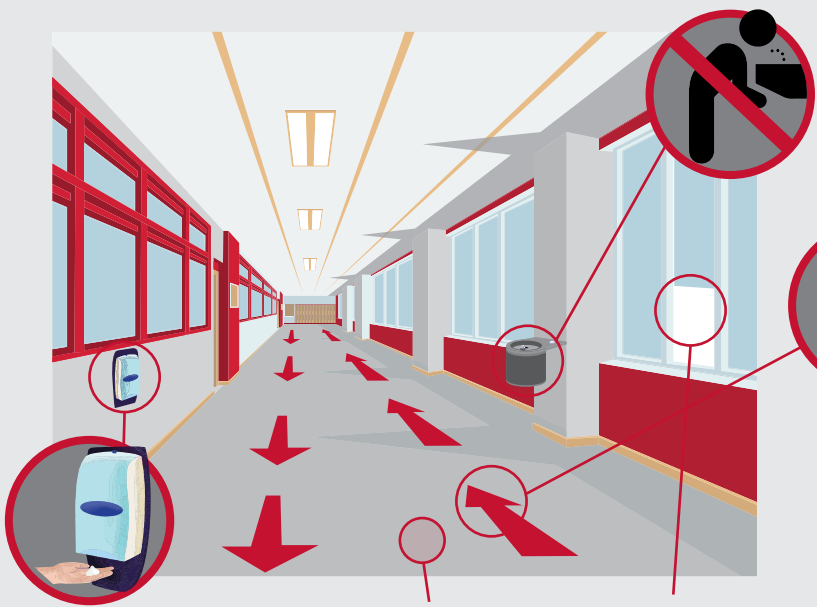
Virtual/Remote Online Learning

MNS will offer remote universal online instruction for students who enroll and for well students who are quarantined

Additional Sanitization Procedures

High touch areas including desk, light switches, door knobs will be sanitized nightly

STAY SAFE to STAY OPEN



Water Fountain Decommissioned

Bottle filling will be available

Additional Mitigation Measures

Including virtual field trips, limit visitors, and no large assemblies

Reduce Congregation

In various areas such as: cafeteria, recess, main office, health room and the use of lockers, library, and restrooms

Controlled Traffic Patterns

Maintain physical distance between students and staff

Outdoor Spaces

Utilize for learning where appropriate, including music and physical education

Hand Sanitizing Stations

Hand sanitizing stations are available in all classrooms and entry ways; dispensers are antimicrobial

Flooring

Antimicrobial floor applications, where floor finish is applied

Windows

Increase fresh air circulation when feasible

Surface Mitigation

Bioprotect application to high touch surfaces to protect against COVID-19 for up to 45 days and antimicrobial floor applications, where floor finish is applied

Isolation Rooms

Available for individuals who may be displaying symptoms while awaiting pickup



Bus

Provide assigned seats and coordinate the release of students to reduce congregating

Multiple Entry Points

Where feasible to reduce bottlenecks

Face Coverings

Face masks are required. Accommodations will be made, with proper medical documentation. Specific ways in which face coverings and partitions will be used in schools, individual classrooms or with individual students and grade levels, including developmental and medical feasibility, will continue to be explored and articulated.

Plexiglass Partitions

Placed in areas throughout the school

VISIT OUR WEBSITE



CLICK HERE

www.muskegonorway.org/about/covid-19-reentry-planning.cfm

